



# **CITY OF LEEDS, ALABAMA**

## **CONSTRUCTION VARIANCE BOARD AGENDA**

Leeds Civic Center Meeting Room -1000 Park Drive, Leeds, Alabama 35094

**December 17, 2019 @ 5:00 PM**

---

**CALL TO ORDER:**

**ROLL CALL:**

**DETERMINATION OF QUORUM:**

**APPROVAL OF MINUTES FROM PREVIOUS MEETING(S):**

**OLD BUSINESS:**

[CV-2019-001](#) - A request to waive the maximum square footage allowed by the ICC International Residential Code as it pertains to construction standards.

EnterTextHere

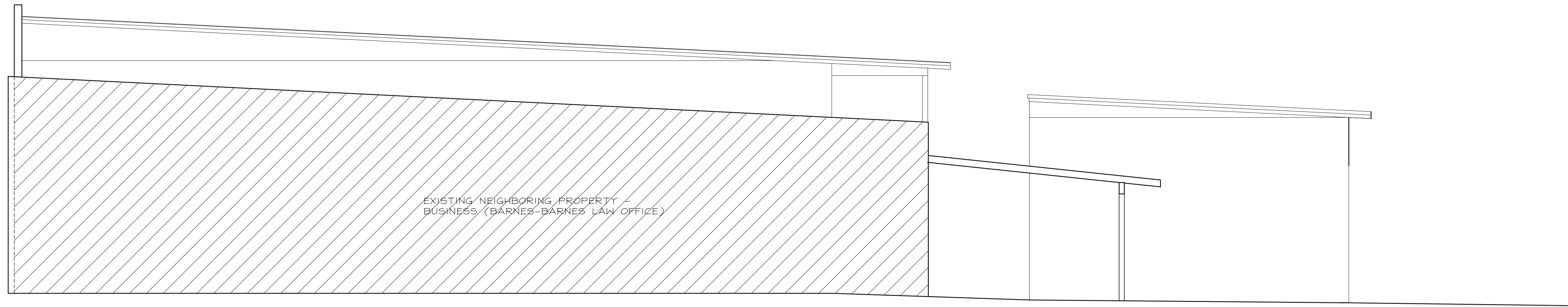
**OTHER BUSINESS:**

**ADJOURNMENT:**

---

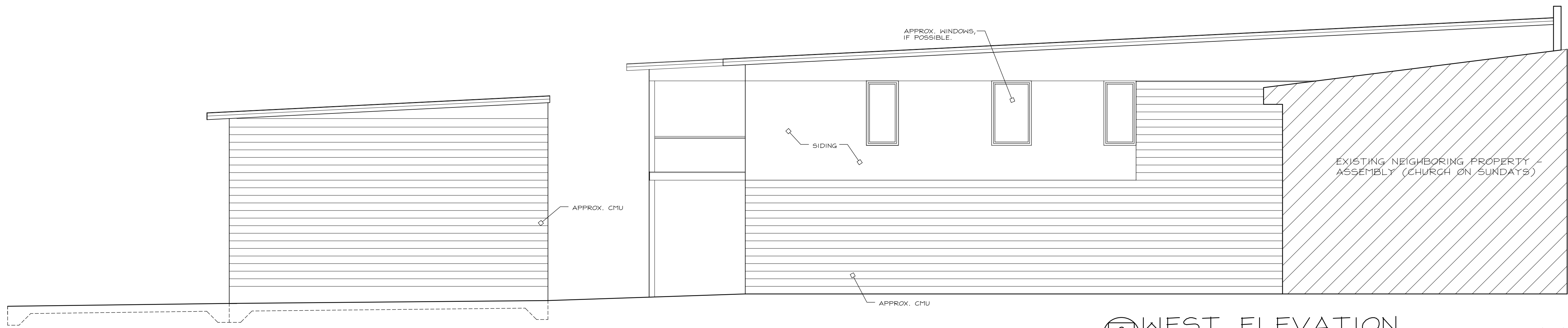
In compliance with the Americans with Disabilities Act, those requiring accommodation for Council meetings should notify the City Clerk's Office at least 24 hours prior to the meeting at 205-699-2585.





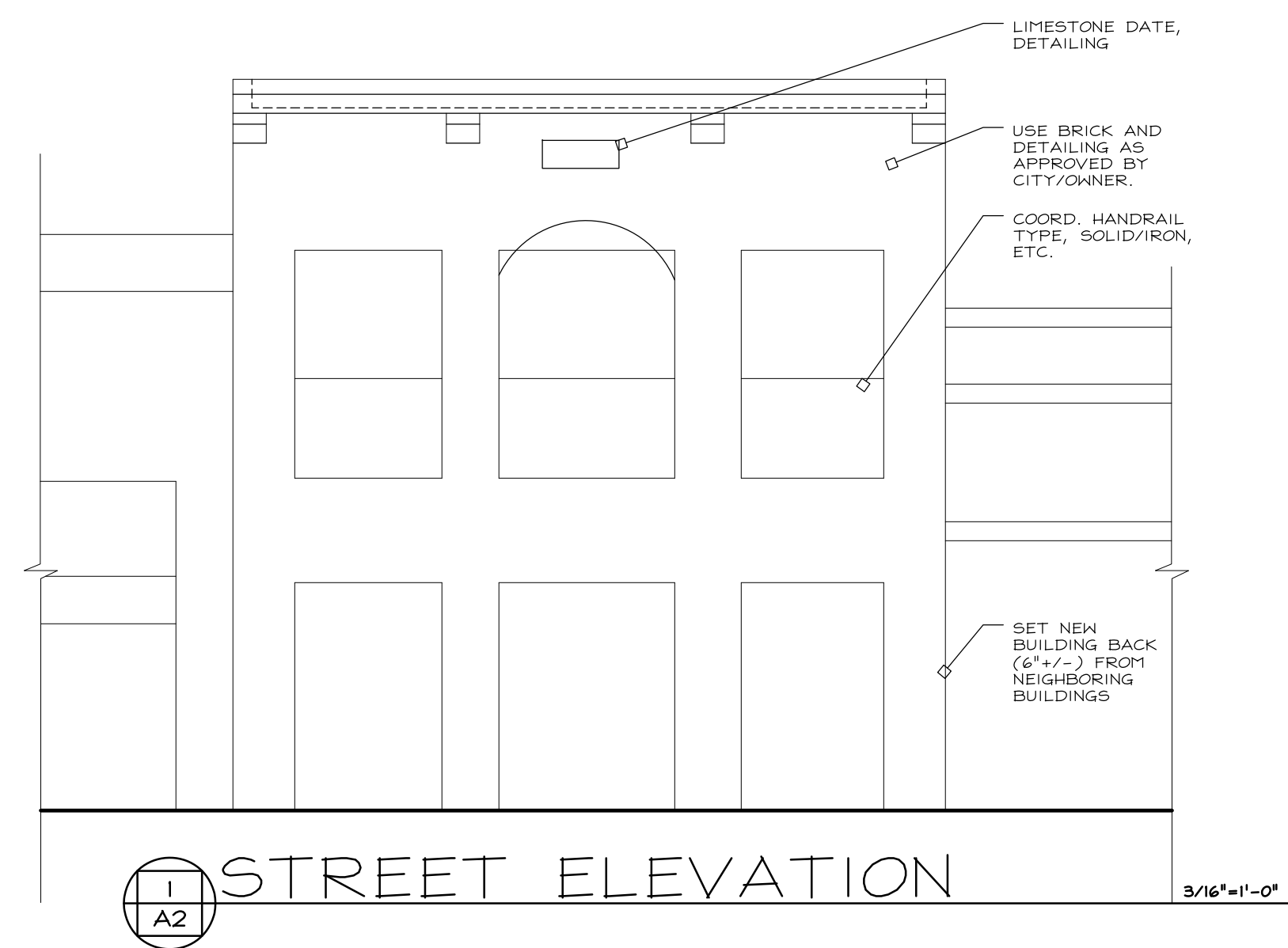
3 EAST ELEVATION

3/16"=1'-0"



2 WEST ELEVATION

3/16"=1'-0"



1 STREET ELEVATION

3/16"=1'-0"

NOTE: THIS IS SCHEMATIC - IT IS THE GENERAL CONTRACTOR'S RESPONSIBILITY TO VERIFY ALL STRUCTURAL COMPONENTS WITH LOCAL ENGINEER AND BUILDING OFFICIALS. VERIFY ALL CODE COMPONENTS TO MEET LOCAL CODES W/ BUILDING OFFICIAL.

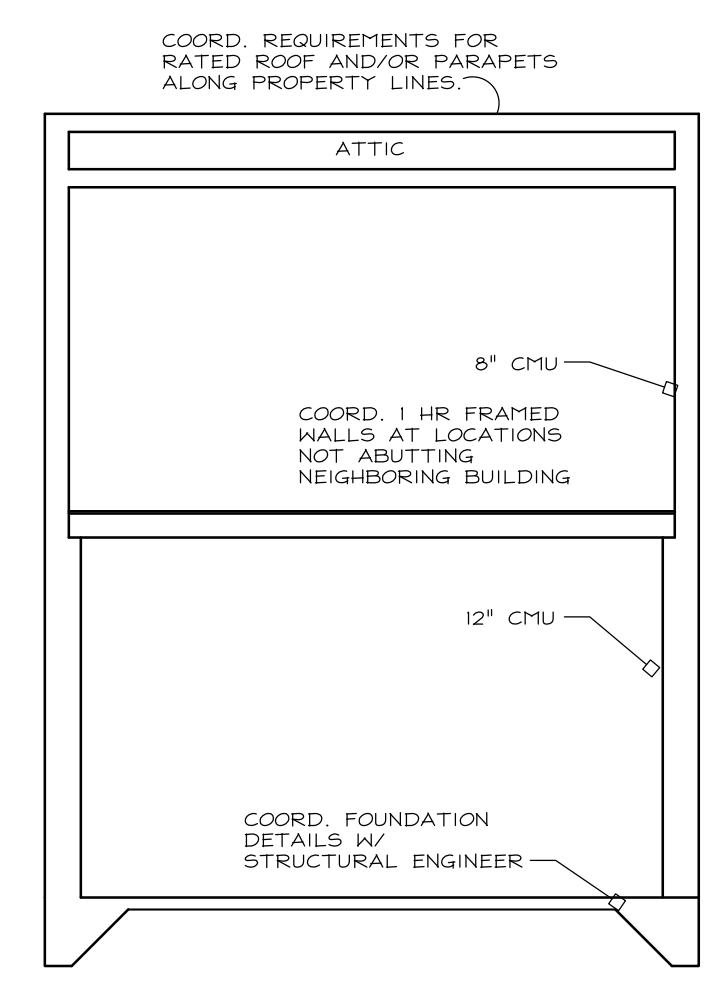
DATE: 20 NOVEMBER 2018  
ISSUE: SCHEMATIC

NOT FOR CONSTRUCTION

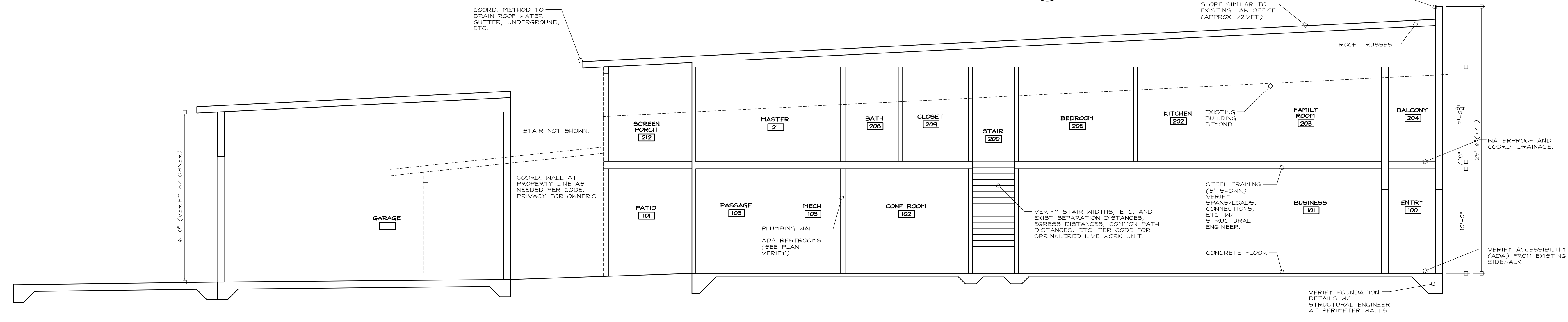
TITLE:

NEW CONSTRUCTION OF  
THE  
DEASON-BARNES  
LIVEWORK UNIT  
PARKWAY DRIVE, LEEDS, AL

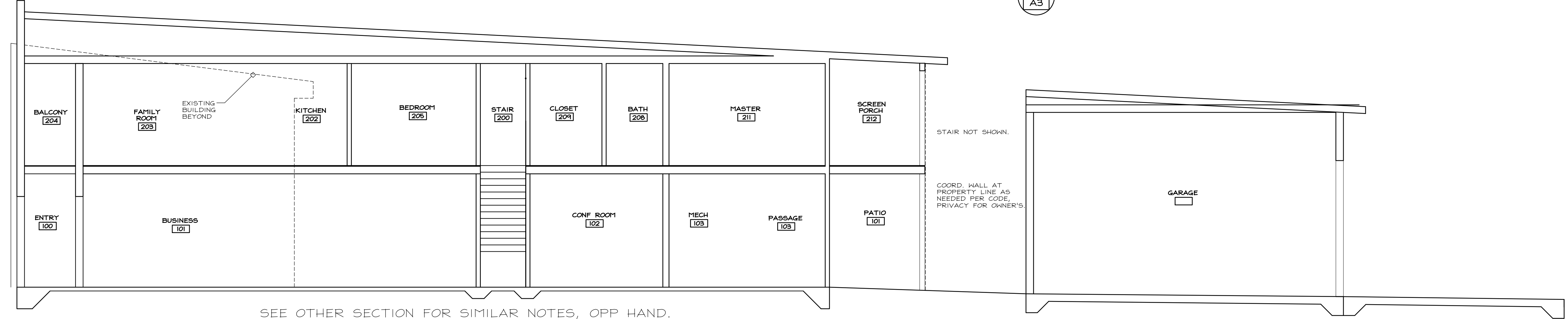
NOTE: THIS IS SCHEMATIC - IT IS THE GENERAL CONTRACTOR'S RESPONSIBILITY TO VERIFY ALL STRUCTURAL COMPONENTS WITH LOCAL ENGINEER AND BUILDING OFFICIALS PER LOCAL CODE COMPONENTS TO MEET LOCAL CODES W/ BUILDING OFFICIAL.



3 TRANSVERSE SECTION 3/16"=1'-0"



2 LONGITUDINAL SECTION 3/16"=1'-0"



SEE OTHER SECTION FOR SIMILAR NOTES, OPP HAND.

1 LONGITUDINAL SECTION 3/16"=1'-0"

DATE: 20 NOVEMBER 2018  
ISSUE: SCHEMATIC  
NOT FOR CONSTRUCTION

TITLE:  
NEW CONSTRUCTION OF THE DEASON-BARNES LIVEWORK UNIT  
PARKWAY DRIVE, LEEDS, AL